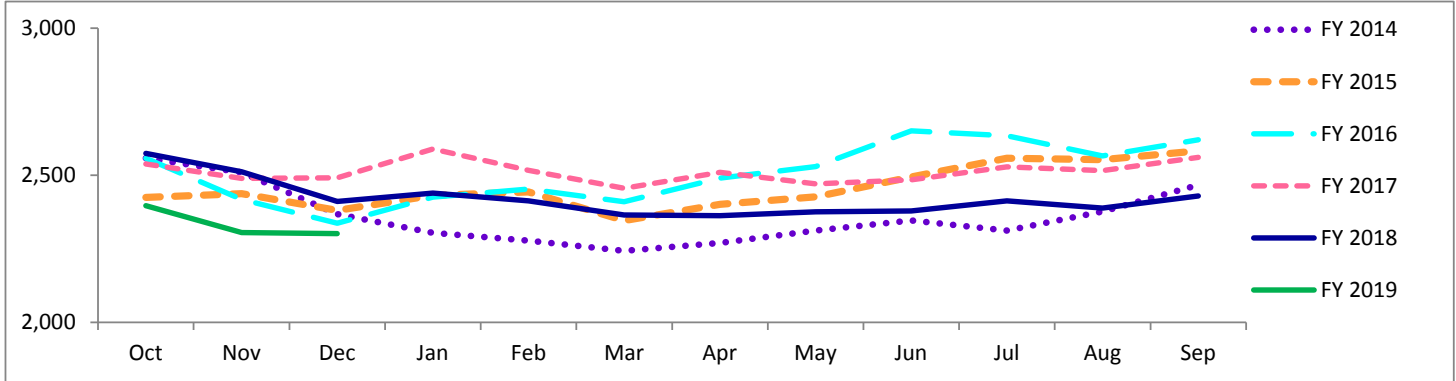


# Travis County Jail Dashboard

## Average Daily Jail Population by Month by Fiscal Year



### Average Daily Population

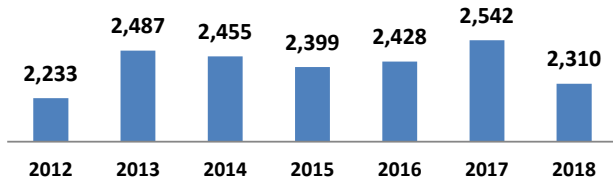
	Oct	Nov	Dec	Jan	Feb	Mar	Apr	May	Jun	Jul	Aug	Sep
<b>FY 2014</b>	2,558	2,510	2,368	2,305	2,278	2,243	2,270	2,312	2,346	2,312	2,377	2,467
<b>FY 2015</b>	2,425	2,437	2,381	2,432	2,443	2,346	2,401	2,427	2,494	2,558	2,553	2,583
<b>FY 2016</b>	2,558	2,418	2,337	2,426	2,453	2,410	2,490	2,530	2,651	2,634	2,566	2,621
<b>FY 2017</b>	2,538	2,489	2,491	2,589	2,517	2,456	2,510	2,470	2,484	2,529	2,516	2,561
<b>FY 2018</b>	2,574	2,512	2,411	2,439	2,413	2,365	2,363	2,376	2,379	2,413	2,389	2,430
<b>FY 2019</b>	2,397	2,305	2,302									

\*Data Date Range: 01 Oct 2013 - 03 Dec2018.

Source: Travis County Sheriff Jail Population Report

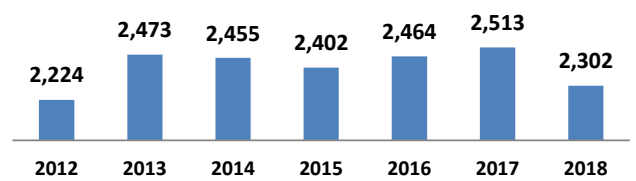
### Average Jail Population for Current Day, Month to Date, Prior Month, and Fiscal Year to Date Compared to Prior Years (Axis 2,000-3,000)

#### Current Day: 03-Dec



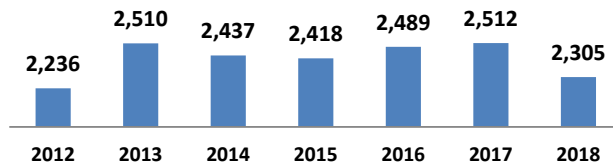
<b># yearly change</b>	254	-32	-56	29	114	-232
<b>% yearly change</b>	11%	-1%	-2%	1%	5%	-9%

#### Month to Date: 01- 03 Dec



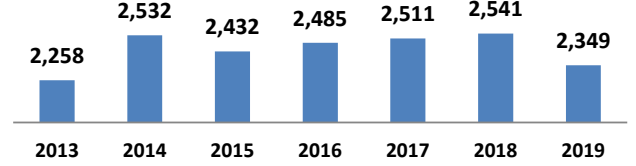
<b># yearly change</b>	249	-18	-53	62	49	-211
<b>% yearly change</b>	11%	-1%	-2%	3%	2%	-8%

#### Prior Month: 01- 30 Nov



<b># yearly change</b>	274	-72	-19	71	23	-207
<b>% yearly change</b>	12%	-3%	-1%	3%	1%	-8%

#### Fiscal Year to Date: 01 Oct - 03 Dec



<b># yearly change</b>	274	-99	53	26	30	-192
<b>% yearly change</b>	12%	-4%	2%	1%	1%	-8%

Source: Travis County Sheriff Jail Population Report