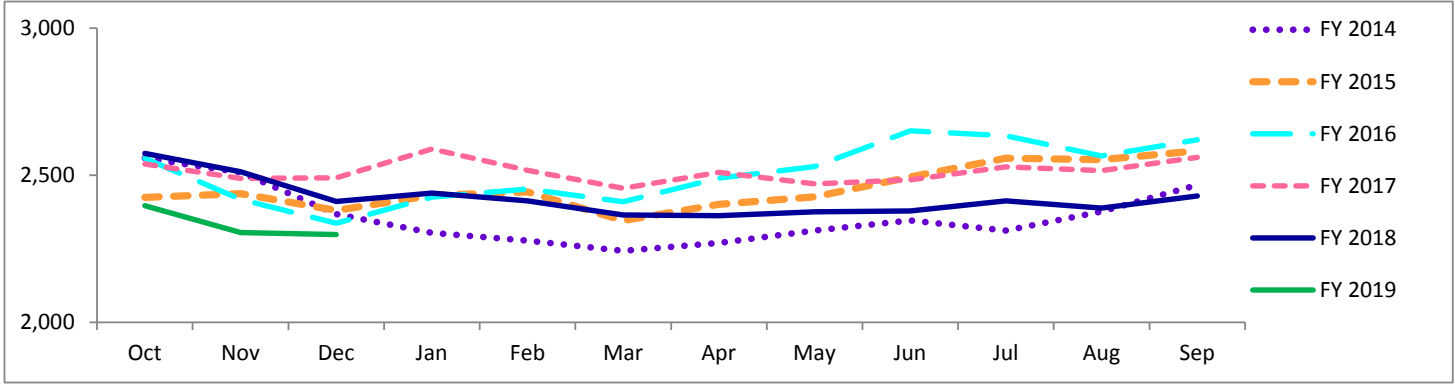


# Travis County Jail Dashboard

## Average Daily Jail Population by Month by Fiscal Year



### Average Daily Population

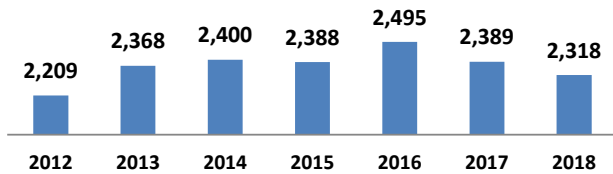
	Oct	Nov	Dec	Jan	Feb	Mar	Apr	May	Jun	Jul	Aug	Sep
<b>FY 2014</b>	2,558	2,510	2,368	2,305	2,278	2,243	2,270	2,312	2,346	2,312	2,377	2,467
<b>FY 2015</b>	2,425	2,437	2,381	2,432	2,443	2,346	2,401	2,427	2,494	2,558	2,553	2,583
<b>FY 2016</b>	2,558	2,418	2,337	2,426	2,453	2,410	2,490	2,530	2,651	2,634	2,566	2,621
<b>FY 2017</b>	2,538	2,489	2,491	2,589	2,517	2,456	2,510	2,470	2,484	2,529	2,516	2,561
<b>FY 2018</b>	2,574	2,512	2,411	2,439	2,413	2,365	2,363	2,376	2,379	2,413	2,389	2,430
<b>FY 2019</b>	2,397	2,305	2,299									

\*Data Date Range: 01 Oct 2013 - 17 Dec 2018.

Source: Travis County Sheriff Jail Population Report

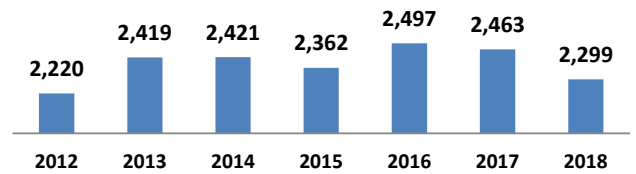
## Average Jail Population for Current Day, Month to Date, Prior Month, and Fiscal Year to Date Compared to Prior Years (Axis 2,000-3,000)

### Current Day: 17-Dec



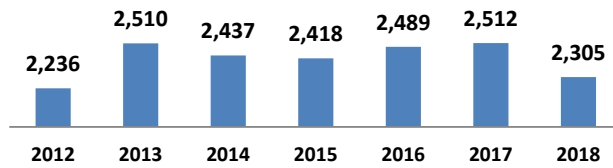
<b># yearly change</b>	159	32	-12	107	-106	-71
<b>% yearly change</b>	7%	1%	-1%	4%	-4%	-3%

### Month to Date: 01- 17 Dec



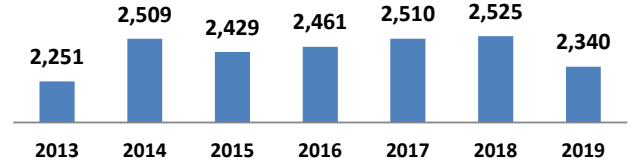
<b># yearly change</b>	199	2	-59	135	-34	-165
<b>% yearly change</b>	9%	0%	-2%	6%	-1%	-7%

### Prior Month: 01- 30 Nov



<b># yearly change</b>	274	-72	-19	71	23	-207
<b>% yearly change</b>	12%	-3%	-1%	3%	1%	-8%

### Fiscal Year to Date: 01 Oct - 17 Dec



<b># yearly change</b>	258	-80	33	49	15	-185
<b>% yearly change</b>	11%	-3%	1%	2%	1%	-7%

Source: Travis County Sheriff Jail Population Report