


Travis County Mental Health Diversion

Diversion Center and
Central Intake Facility

Design Project Launch

June 18, 2025



- 
- Welcome and Agenda
 - Project Purpose and Vision
 - Design Team Introduction and Project Overview
 - Future Ways to Engage

AGENDA



Project Purpose and Vision

- Andy Brown, Travis County Judge
- Lisa Davis, Austin Police Department Chief
- Sally Hernandez, Travis County Sheriff

TRAVIS COUNTY DIVERSION CENTER CENTRAL INTAKE FACILITY

COMMUNITY LAUNCH JUNE 18, 2025



DESIGN & PLANNING TEAM



Charles Goodman, AIA, CCHP
Principal-in-Charge



Jody Tettleton, AIA, LEED® AP BD+C
Senior Project Manager



David McLemore, AIA, ACHA, LEED® AP
Medical Planning & Mental Health Design



Benito Guerrier, AIA, LEED® GA
Government Project Planning



Necia Bonner, IIDA, CHID
Interior Design & Health Environments

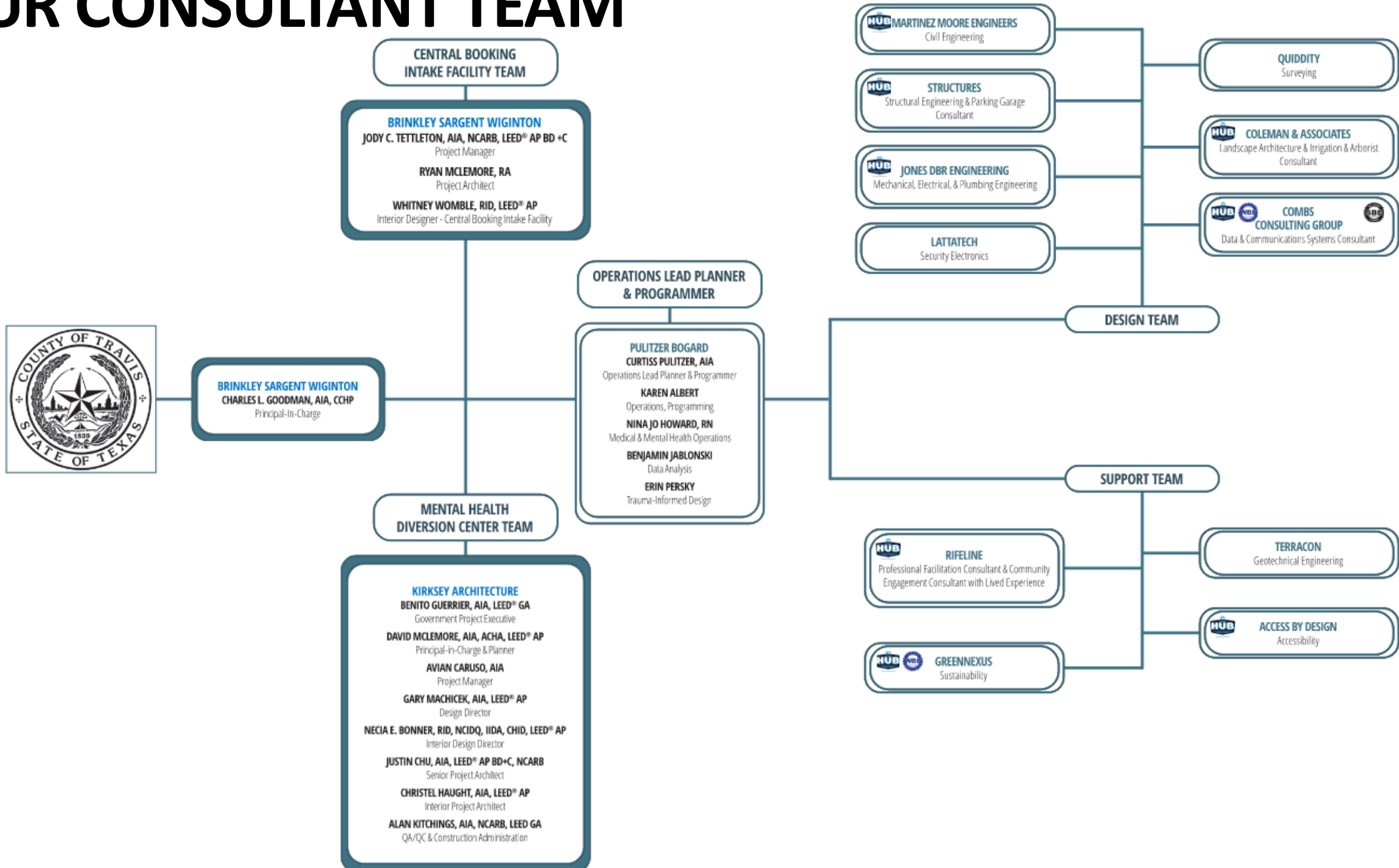


Curtiss J. Pulitzer, AIA
Operations Planning & Programming



Katy Fitzgold
Community Engagement

YOUR CONSULTANT TEAM





CREATING YOUR STORY



WE BELIEVE



INNOVATION



STEWARDSHIP

WELL-BEING

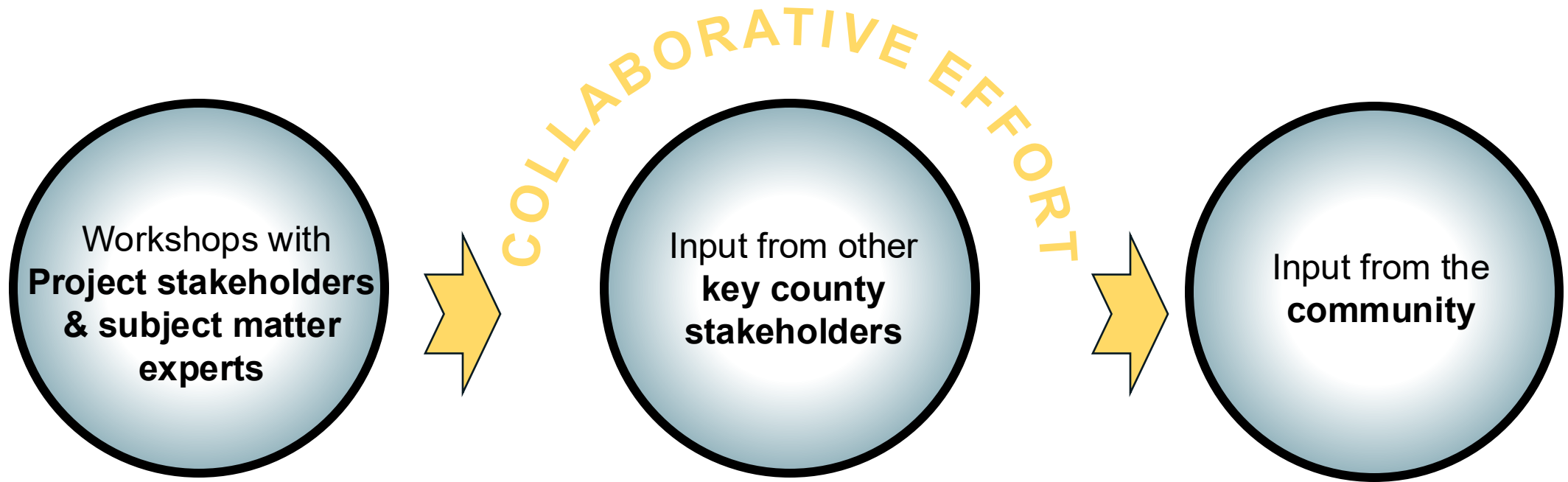


SOCIAL JUSTICE



RESILIENCY

COMMUNITY ENGAGEMENT & STAFF WORKSHOPS



FACILITY/ INDUSTRY RESEARCH



WHO IS THE DESIGN TEAM?

- Patients
- Psychiatrists
- Psychologists
- Registered Nurses
- Law Enforcement
- Social Workers
- Counselors
- County Judges
- Program Facilitators
- Rec Therapists
- Activity Therapists
- Dietary Services
- House Keepers
- Facility Engineers
- DA & County Attorney
- Patient Advocates
- Public Defenders
- Clerks



PROJECT PROCESS: KEY FACILITY PLANNING OBJECTIVES

Ensure efficient flow of operations & continuum of services

- Medical and mental health treatment needs
- Safety, security and operating philosophy
- Staffing efficiency & wellness
- Gender and trauma informed needs, biophilic design
- Restorative justice through successful re-entry
- Current trends and best practices



PROJECT PROCESS: FACILITY PROGRAMMING

Operating Principles & Architectural Space Programs

Programming Workshops

Collaborative Facility Envisioning

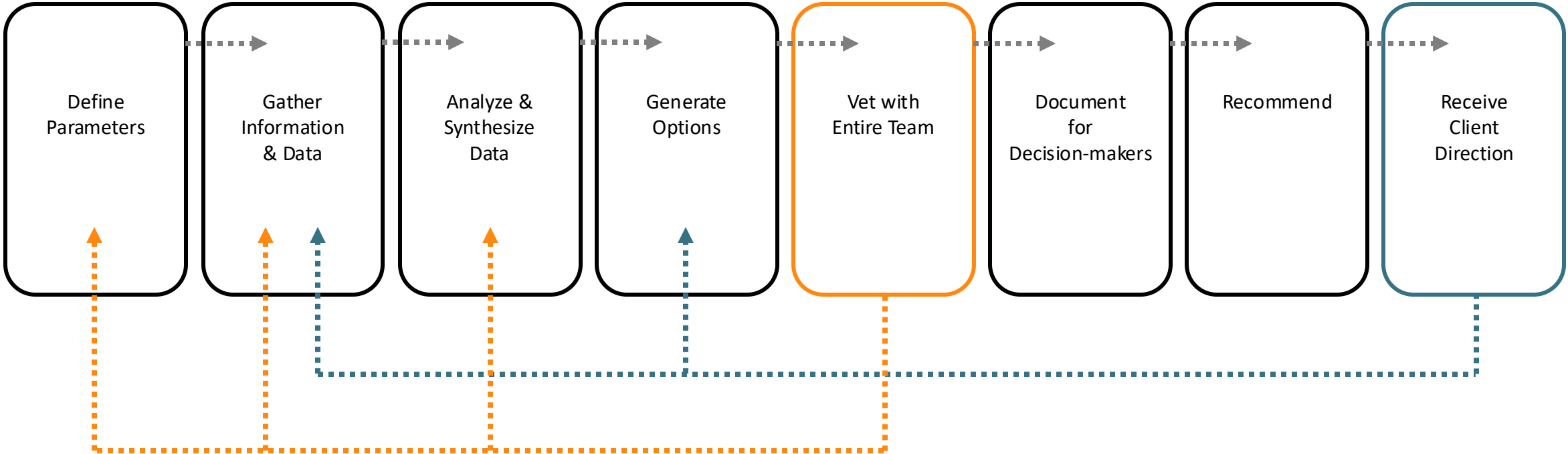
Operating Parameters

Architectural Space Program

#	Functional Area	NSF	GSF	Exterior SF	Notes
MAJOR COMPONENT					
1.000	PUBLIC LOBBY	4,231	5,923	0	
2.000	STAFF SUPPORT	3,220	4,347	0	
3.000	ADMINISTRATION	3,900	5,021	0	
	STATION	2,775			
	SECURITY OPERATIONS	1,245			
	CONDENS & T...	5,699			
		27,780			
	IN	9,090			
	IS AND	8,290			
	CARE S	10,570			
	SERVICE	7,915			
	DRY	1,280			
	WAREHOUSE	4,480	4,500	250	
14.000	MAINTENANCE/CENTRAL PLANT	7,030	7,998	0	
15.000	SITE ISSUES	0	0	8,600	
	SUBTOTAL	107,505	144,451	169,040	
	Gross Factor (15%)		21,668		Includes mechanical/electrical closets, building skin, major circulation, and building connectors
	TOTAL		166,119	169,040	

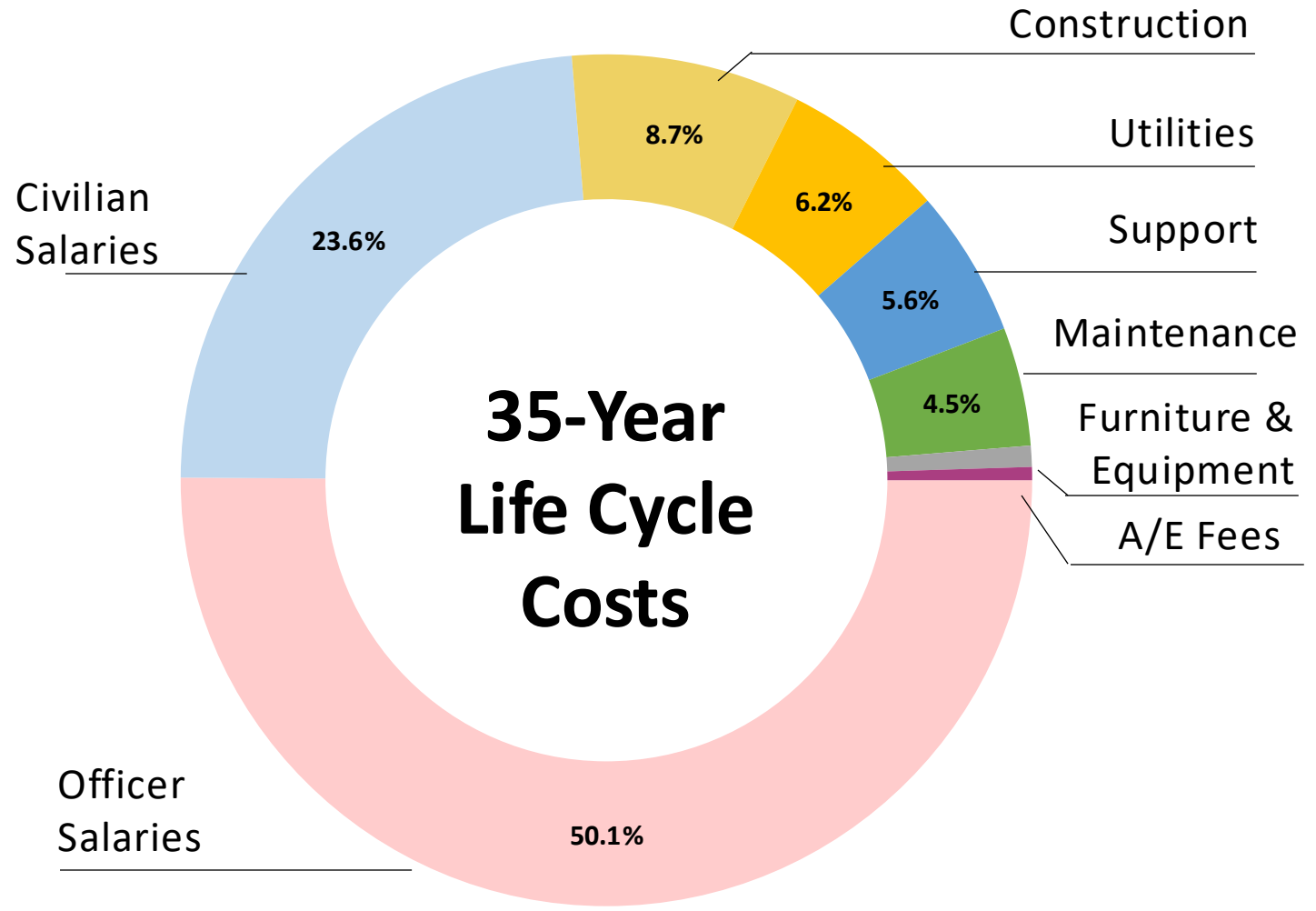
The Iterative Feedback Process

Review sessions → Thorough vetting with the client of all work products → Key decisions are always highlighted & discussed



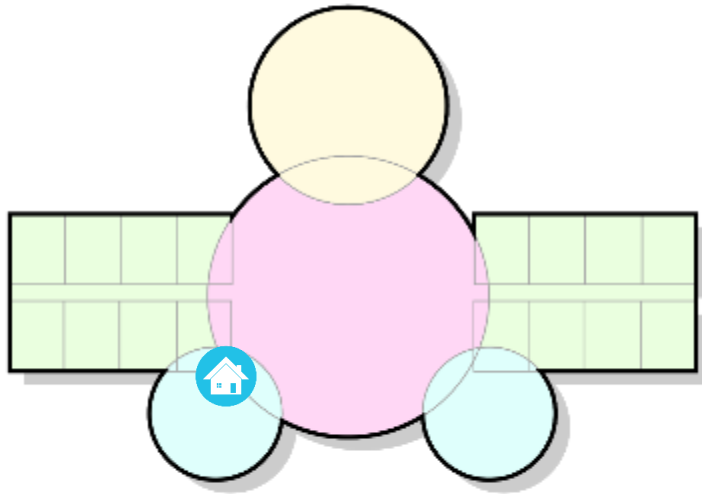
PROJECT PROCESS: OPERATING COSTS ANALYSIS

- Current staff utilization
- Overtime analysis
- Develop proper Shift
- Relief/NAWH
- Develop staffing forecasts/options
- Analysis of other-than-staffing operating expenditures

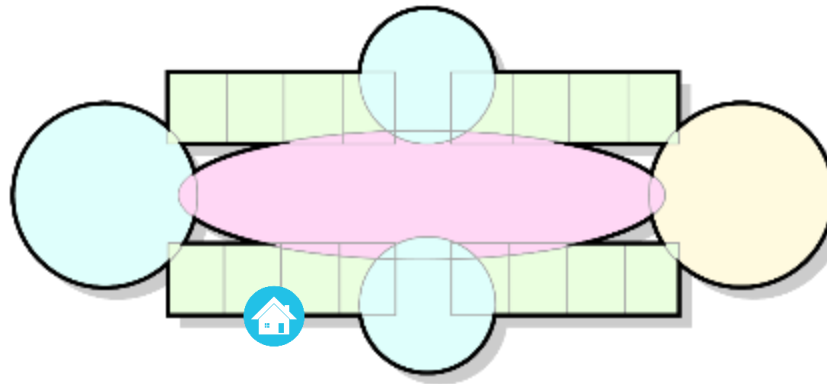


Sample Illustration

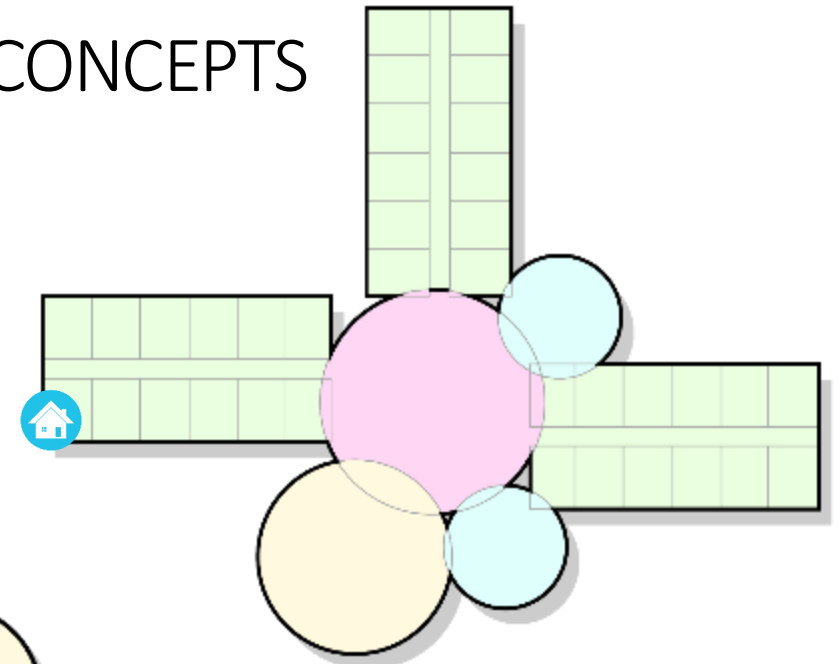
ENVIRONMENT OF CARE | COMMUNITY CONCEPTS



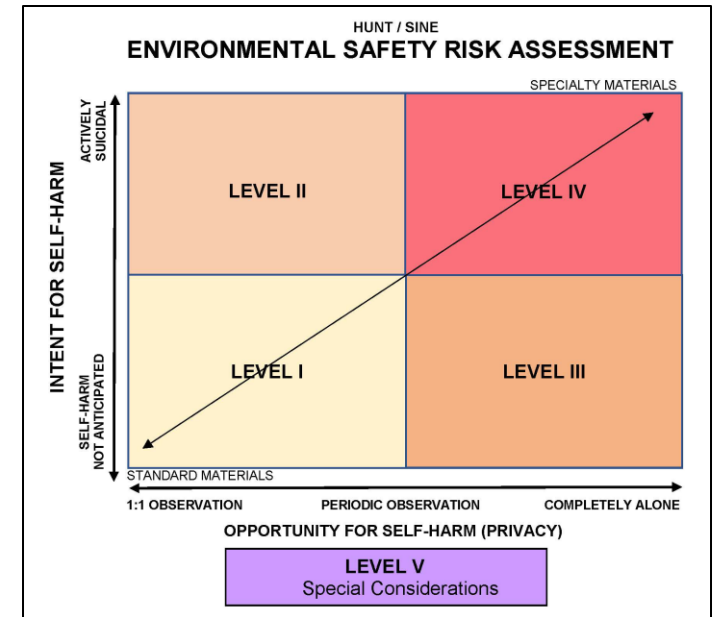
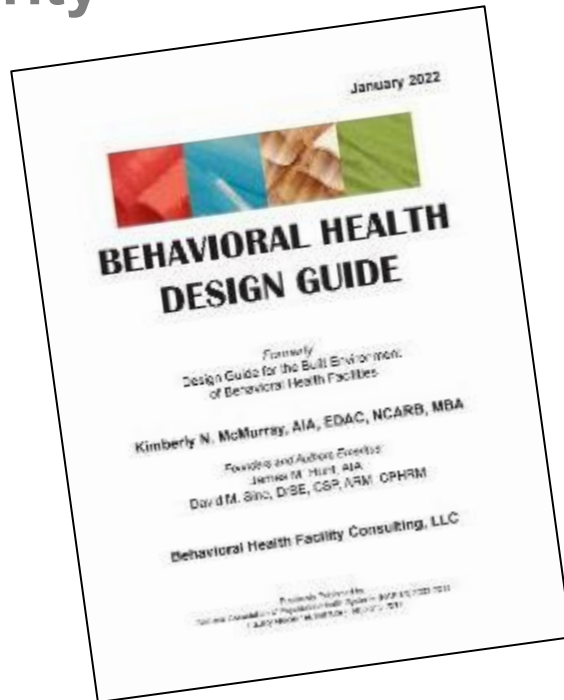
Security



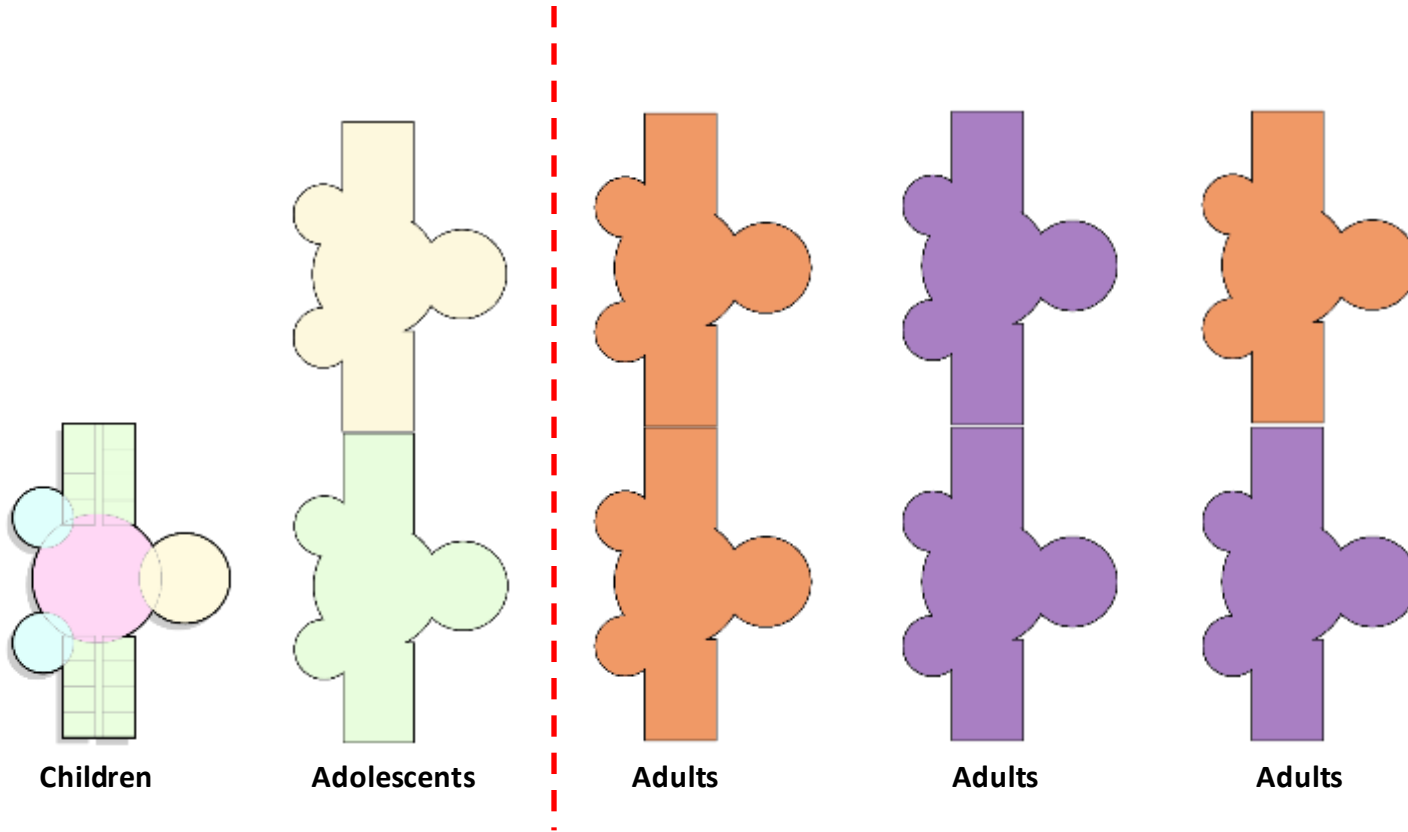
Neighborhood



Efficiency

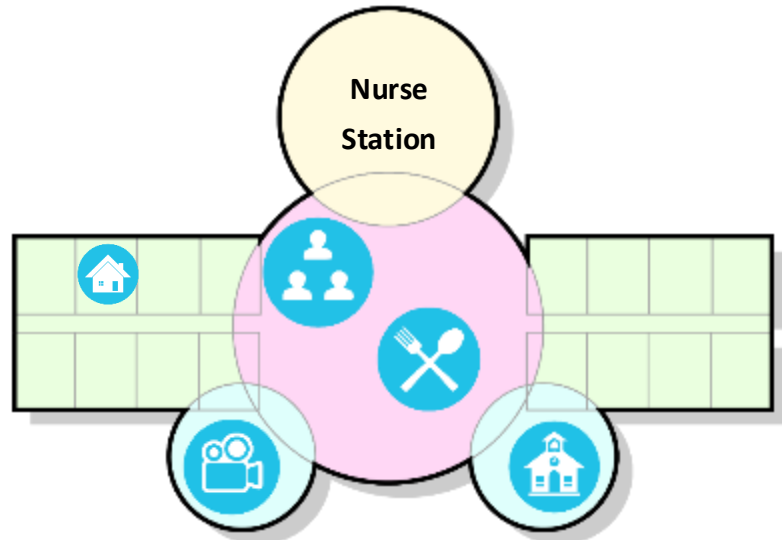


ENVIRONMENT OF CARE | COMMUNITY CONCEPTS

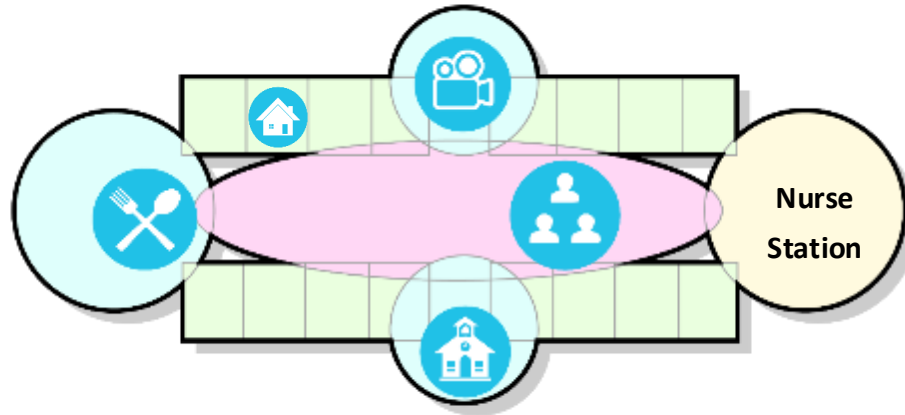


- Forensic
- Acuity
- Age
- Sex
- Diagnosis
- Private
- Semi-Private
- Disability
- Compatibility
- Level of Responsibility
- Elopement Risk
- Aggressiveness
- Medical

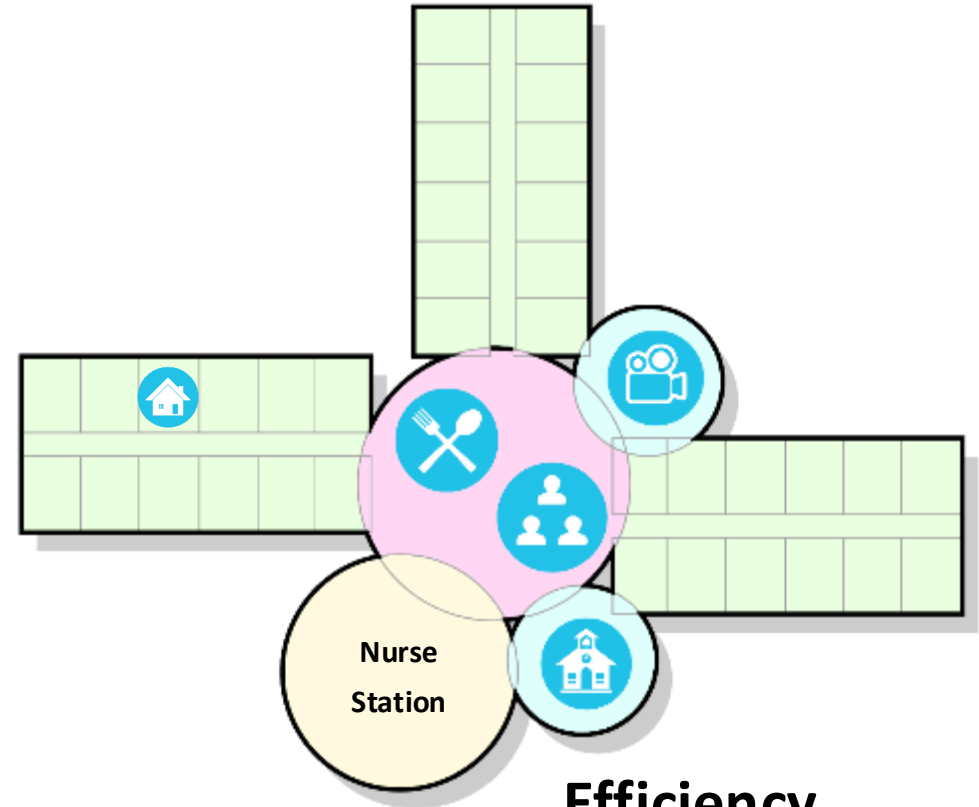
ENVIRONMENT OF CARE | COMMUNITY CONCEPTS



Security



Neighborhood



Efficiency

Nurse
Station

Nurse
Station

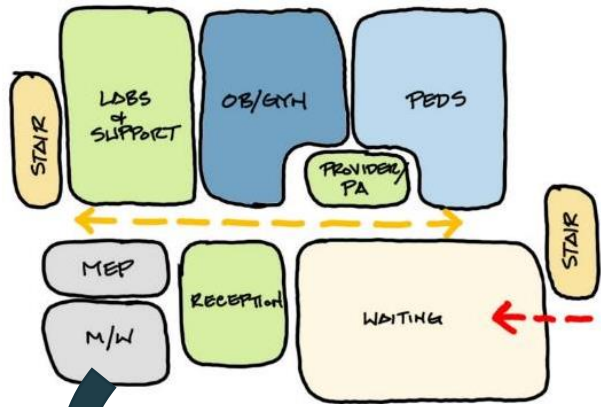
Nurse
Station

Nurse
Station

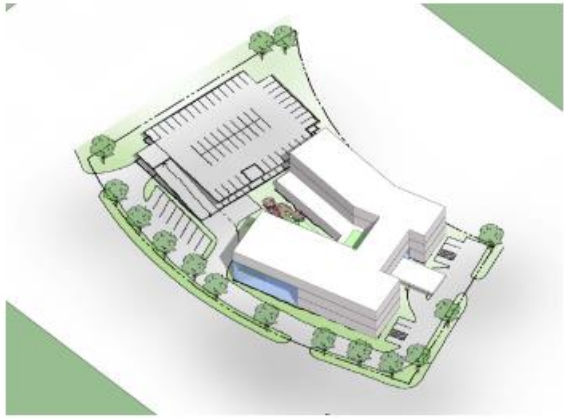
VISUALIZE | A VERTICAL CAMPUS



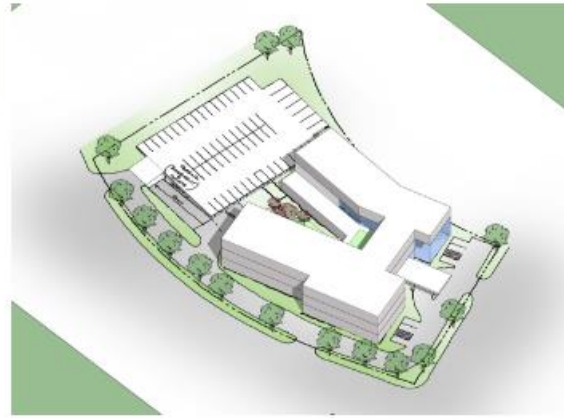
CONCEPTUAL PLANNING | PROGRAM ANALYSIS



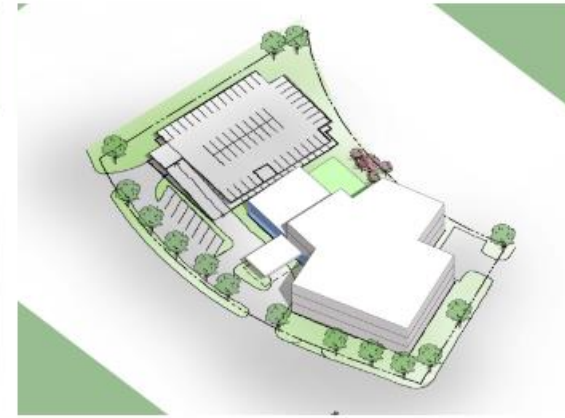
SITE | PLANNING & YIELD ANALYSIS



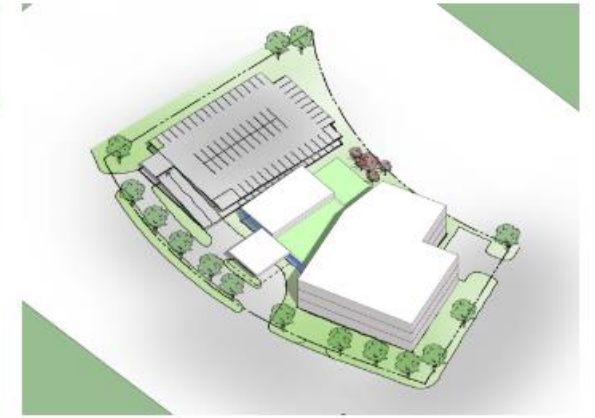
A



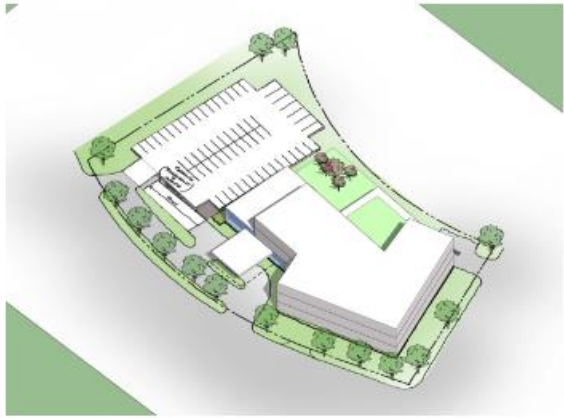
B



C



D



E



F




G





H

MASSING DIAGRAMS


SUSTAINABILITY | DESIGN & BUILDING PERFORMANCE


 Strategic orientation for daylighting and glare reduction


 Daylight sensors and lighting control for energy efficiency

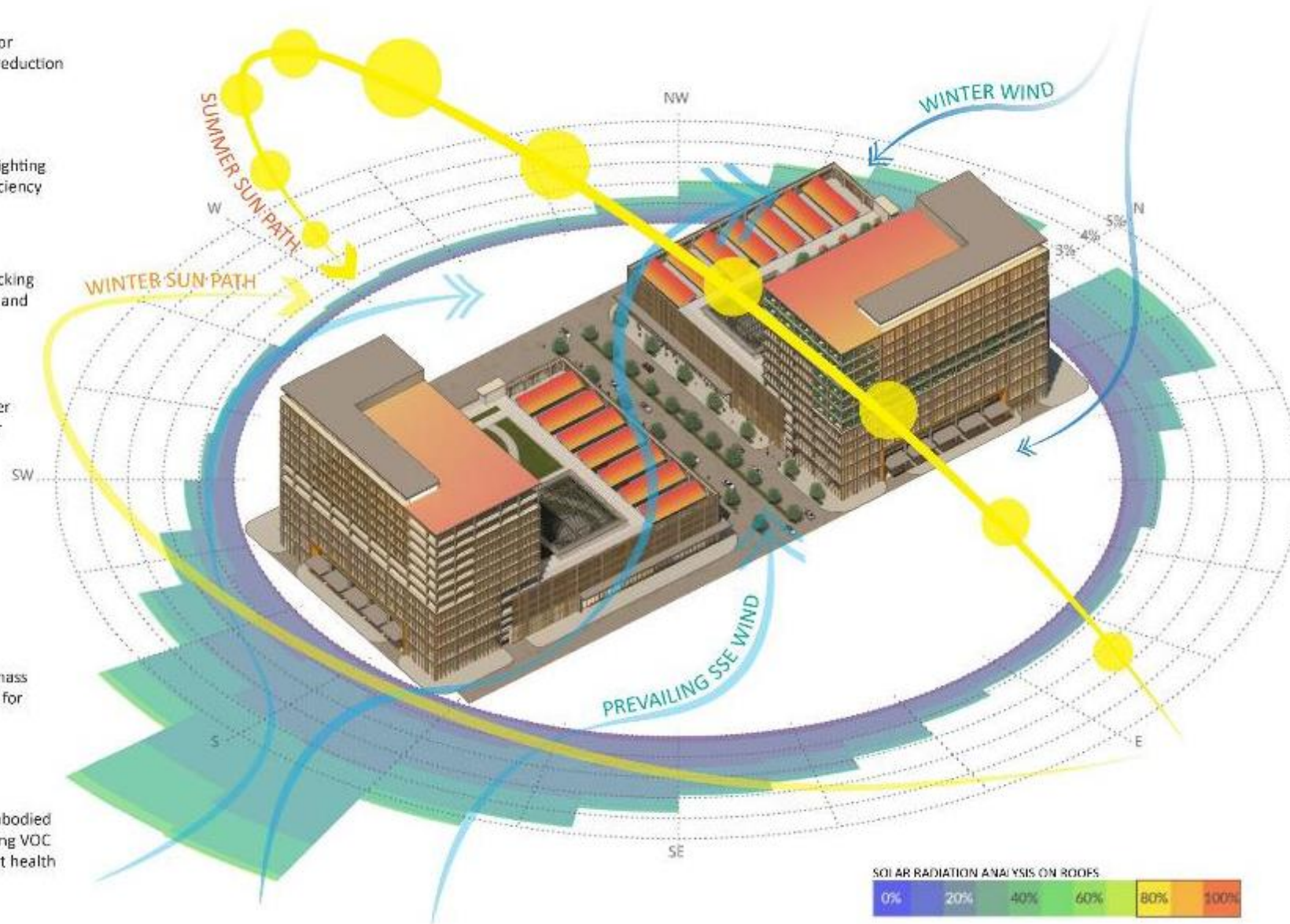
 Operational based tracking through sub metering and automation


 CO2 sensors and higher MERV filters for better indoor air quality

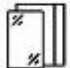
 Energy Star certified equipment


 Responsibly sourced mass timber materials used for construction


 Materials with low embodied carbon and low emitting VOC help improve occupant health





 Amenity deck provides community enrichment and boosts occupant well-being

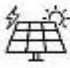
 Glass facades with low-e coatings and low solar heat gain coefficients reduces cooling loads

 Native and adapted plantings use 50% less water for irrigation

 Combined collection areas for rainwater and A/C condensate

 Low flow fixtures for water efficiency

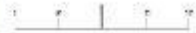
 Raised canopy reduces solar heat gain on roof to lower energy consumption

 PV array canopy is feasible as the roof receives direct solar radiation to offset energy consumption

SITE | GAIN UNDERSTANDING



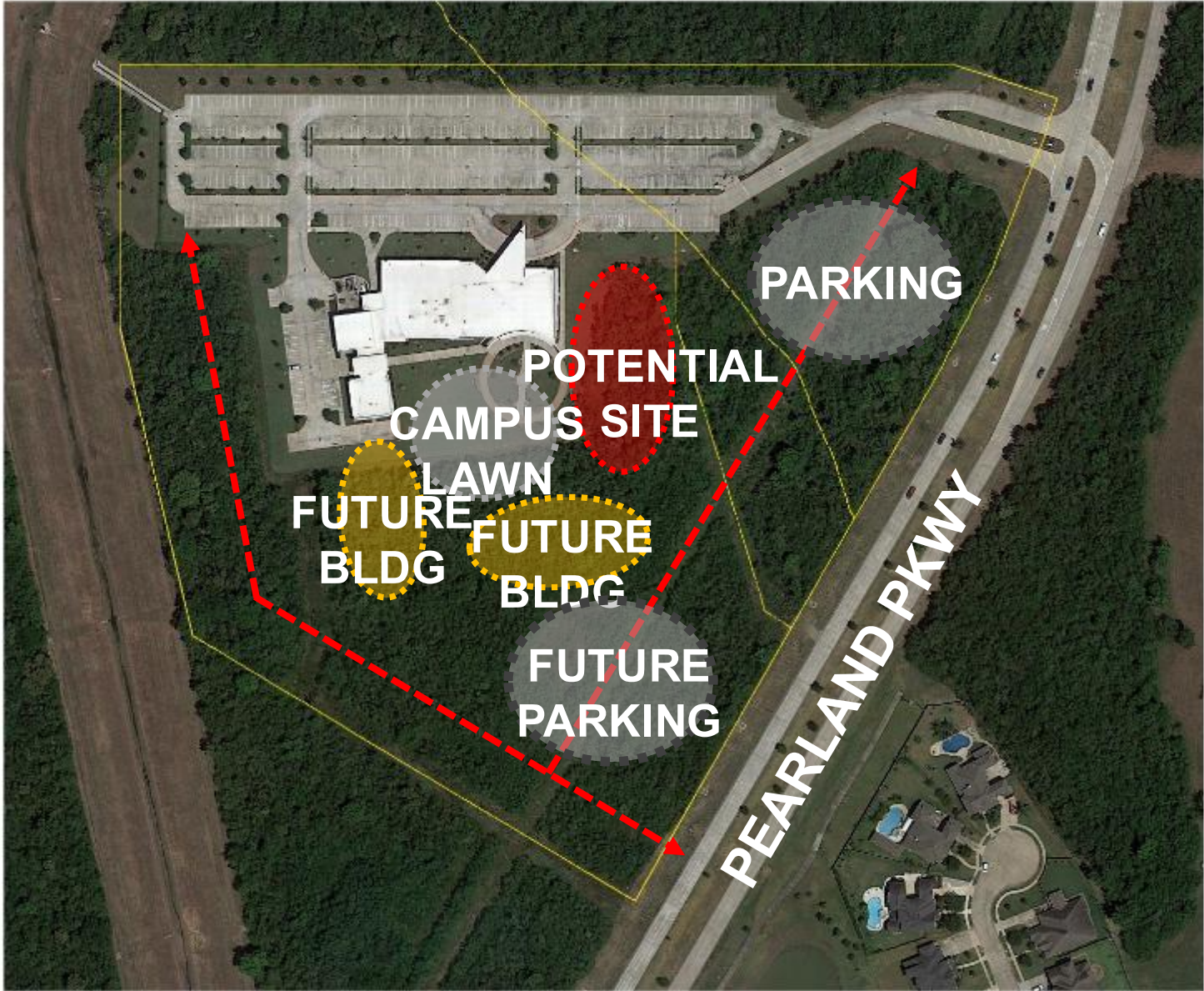
SITE | GAIN UNDERSTANDING



SITE | GAIN UNDERSTANDING



SITE | GAIN UNDERSTANDING



SITE | GAIN UNDERSTANDING



SITE STUDY METHODOLOGY



SITE STUDY METHODOLOGY



SITE STUDY METHODOLOGY



SITE | ANALYSIS & VISUALIZATION



SCULPTURE IN THE PARK



VILLAGE IN THE PARK



PARK TOWERS



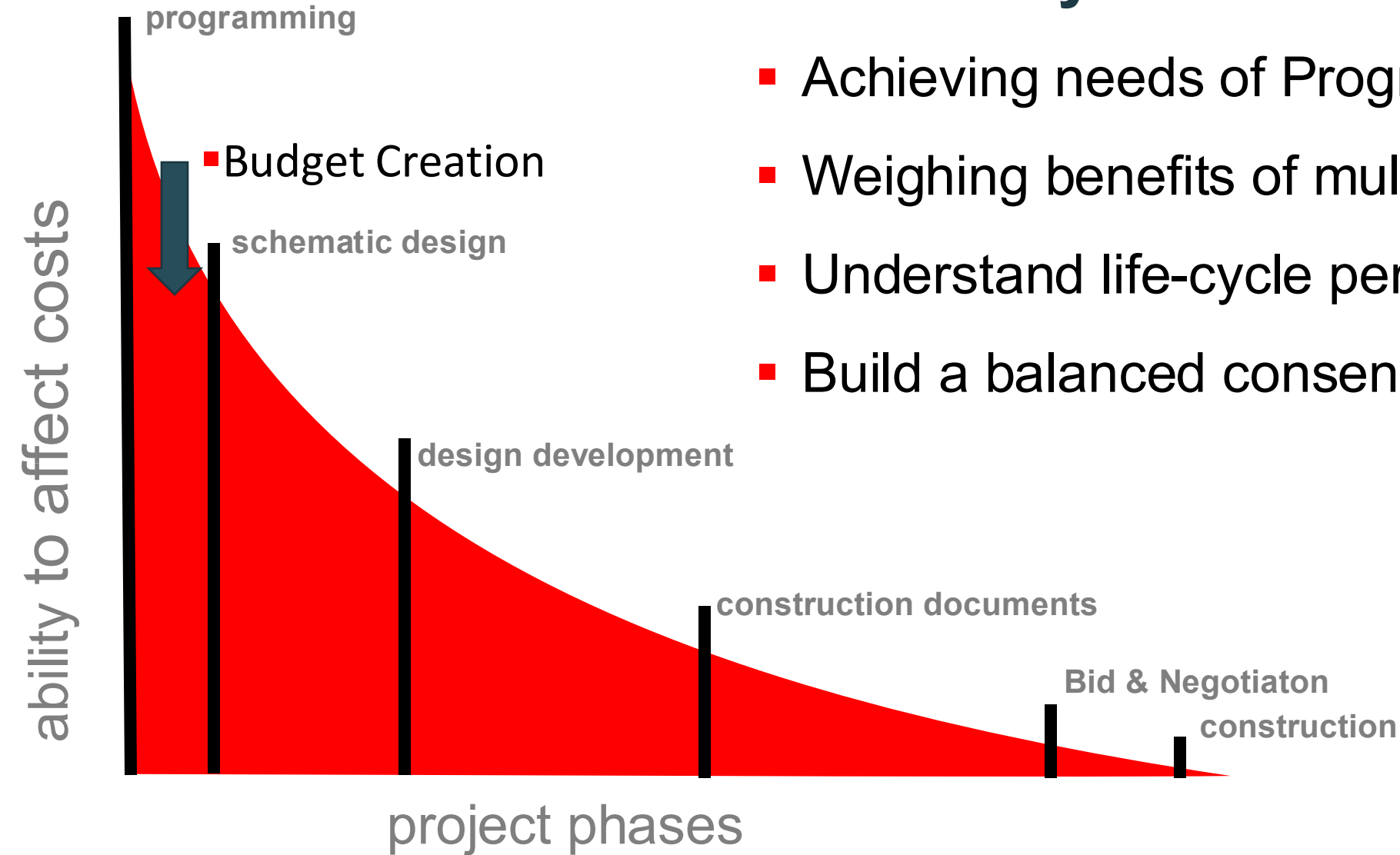
FRAMING THE PARK



URBAN PARK

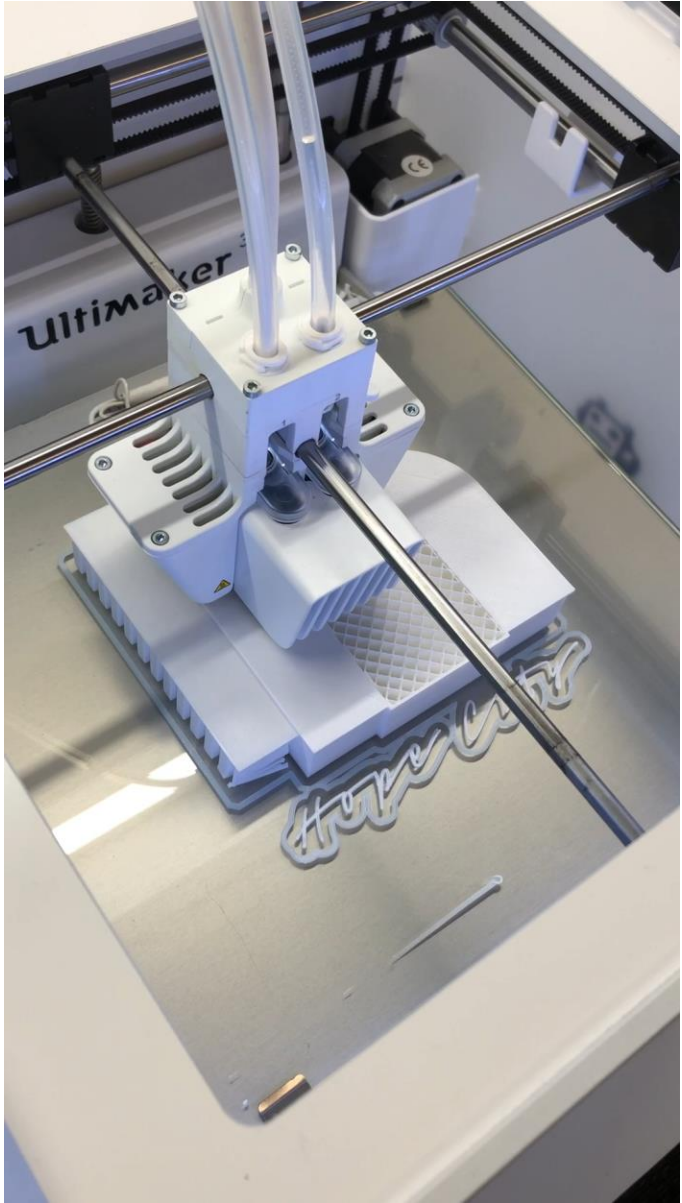
Cost Analysis & Recommendation

- Achieving needs of Program
- Weighing benefits of multiple sites
- Understand life-cycle performance
- Build a balanced consensus



BUDGET DEVELOPMENT

VISUALIZING YOUR OPTIONS



VISUALIZATION | CONCEPT TO FUTURE REALIZATION



COMMUNITY ENGAGEMENT



10 Principles for Building with Dignity



- Create well-defined healing spaces
- Nature within and nature without
- Variety of building typologies as a Neighborhood
- Maintain a human scale to reduce stress
- Make visible the vitality and richness of engagement
- Broad palette of timeless materials
- Applied color infused with natural landscape
- Vertical campus should integrate with Horizontal campus through architectural form
- Durability, performance, long-term sustainability
- Progressive and future-oriented institution

DOCUMENTING THE PROCESS

The **DesignGuide** is a resource book providing clients with up-to-date design information while becoming a valuable reference for the project team.



CONSENSUS BUILDING & FINAL PRESENTATIONS



Not like this.

SITE | NARROWING OUR FOCUS

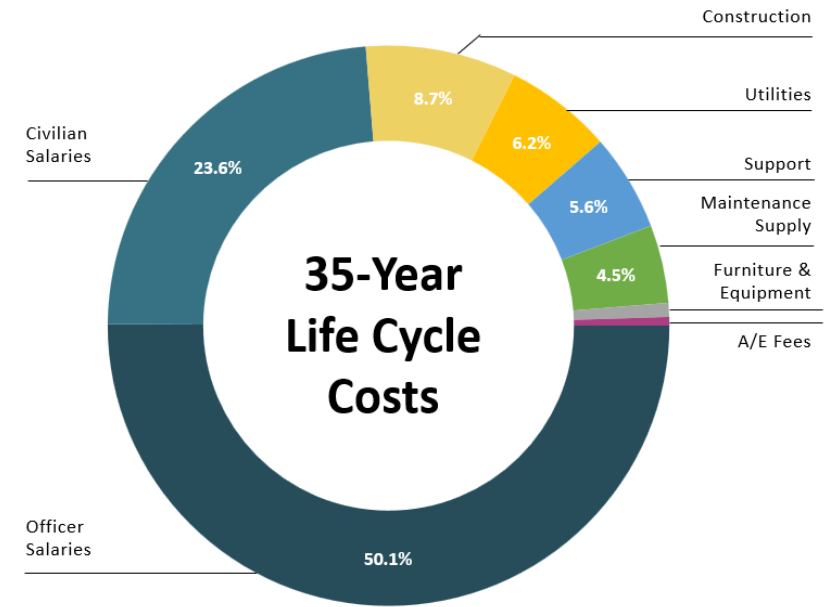


1



2





Consensus for next steps...

- Evaluating utilization of county resources.
- Improving outcomes for the individuals utilizing these facilities.
- Understanding how the project will operate into the future.
- Balancing initial capital outlay with long term operational costs
- Strive for greatest positive individual and community impact potential



Community Participation

How to Engage and Stay Informed?

- Briefings at Travis County Commissioner's Court meetings
- Travis County Diversion Center website
- Email communications with significant updates

Stay Informed on Progress:

Sign Up!

**Sign up for more
information about how to
stay engaged!**

Sign Up for Communications!



Feedback and Questions Gallery

What needs do you hope these facilities
can help to meet?

What questions do you have about the
design process?

Thank you!

Learn more and get in touch:

www.traviscountytx.gov/DiversionCenter